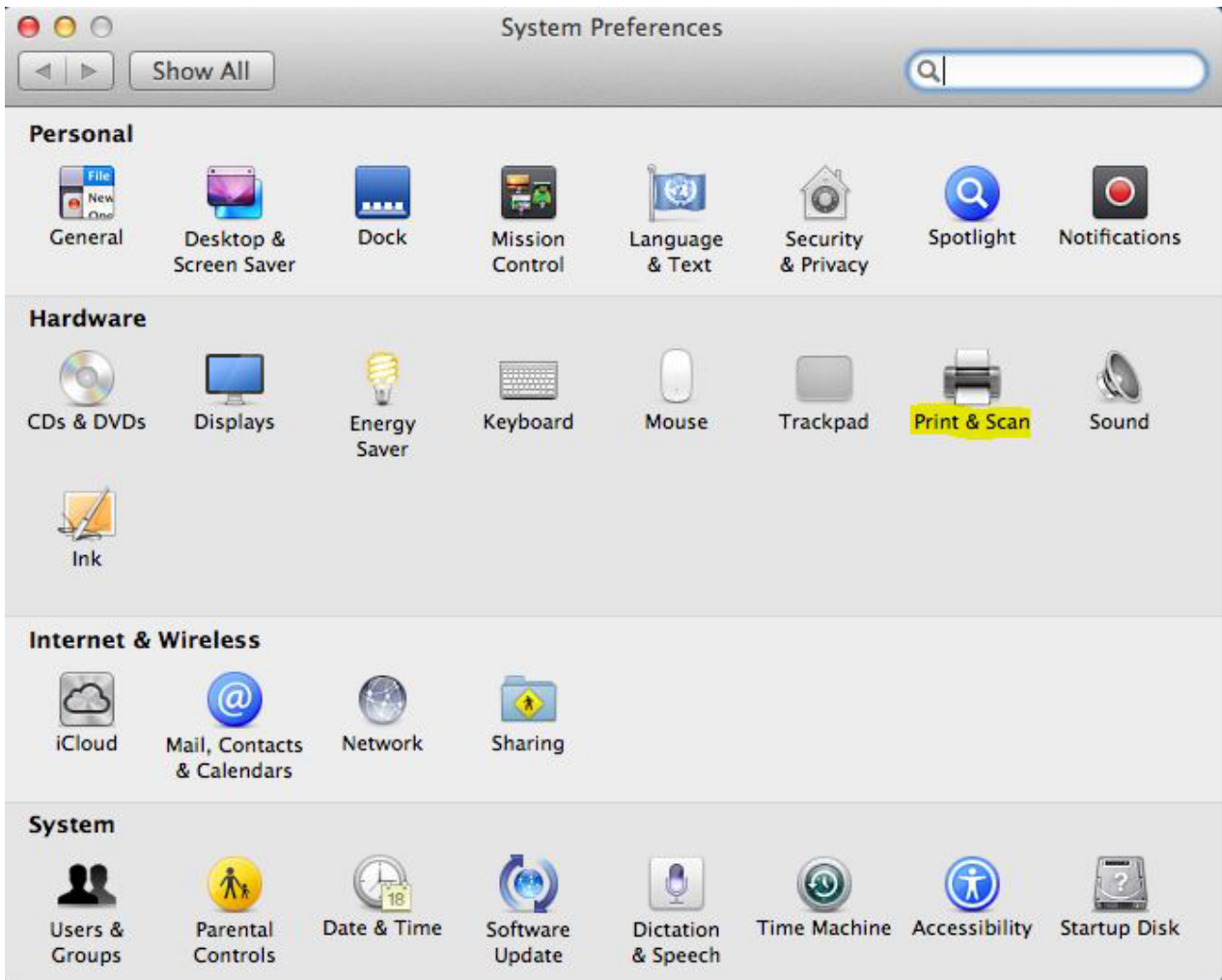
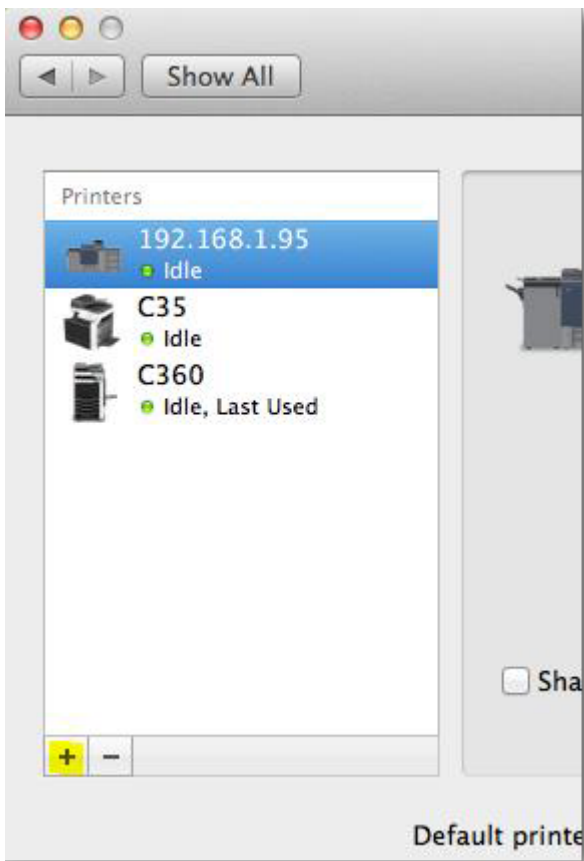


How to set up a Mac to print to a Windows Print Server

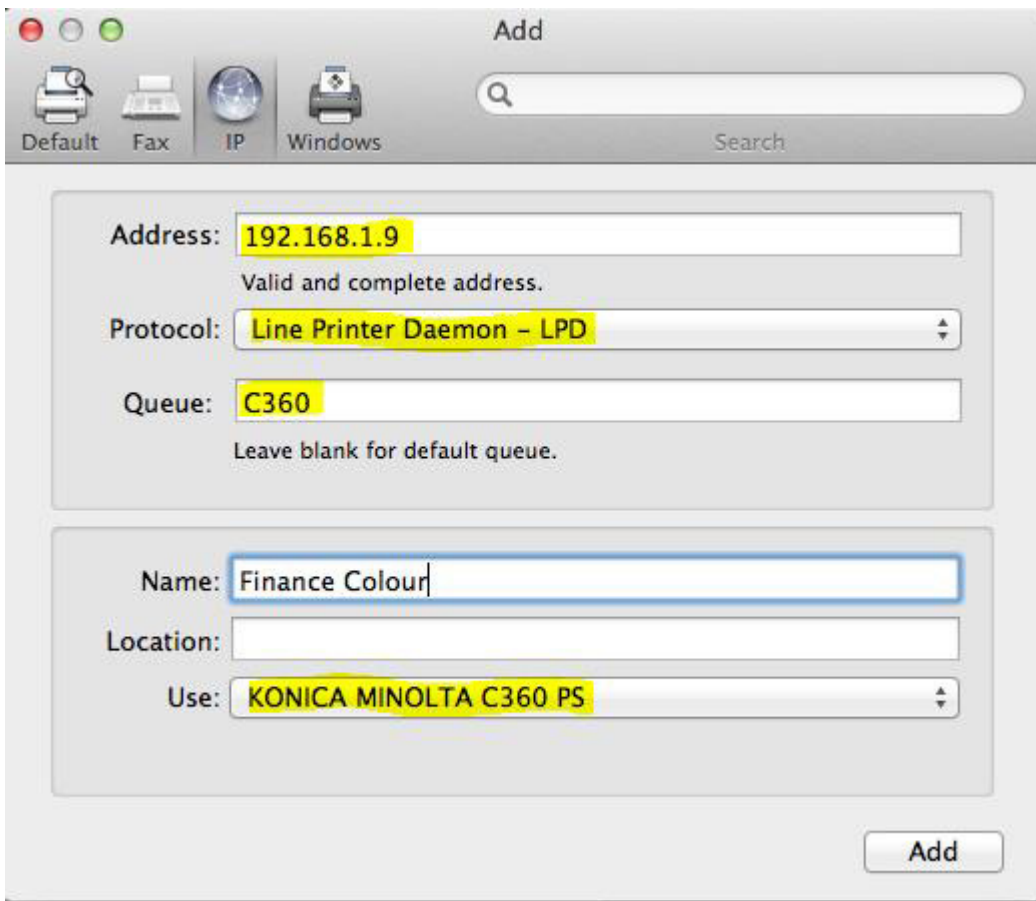
1. Ensure the correct Konica Minolta driver is installed.
2. Open System Preferences and choose Print & Scan



3. Click the + symbol below the printer list:



4. Enter the IP address of the Windows print server in the **Address** text box.
5. Choose **Line Printer Daemon – LPD** from the **Protocol** drop down.
6. Enter the **Share Name** of the windows printer in the **Queue** text box. Note this is case sensitive.
7. Ensure the correct driver is selected from the **Use** drop down (choose **Select Printer Software** and ensure the correct Konica Minolta driver is selected for the particular printer model.)



8. Click Add.

Document revision date: 2018/10/29
Software version: 2.2.50.1
© 2018 Blue Swift Software CC