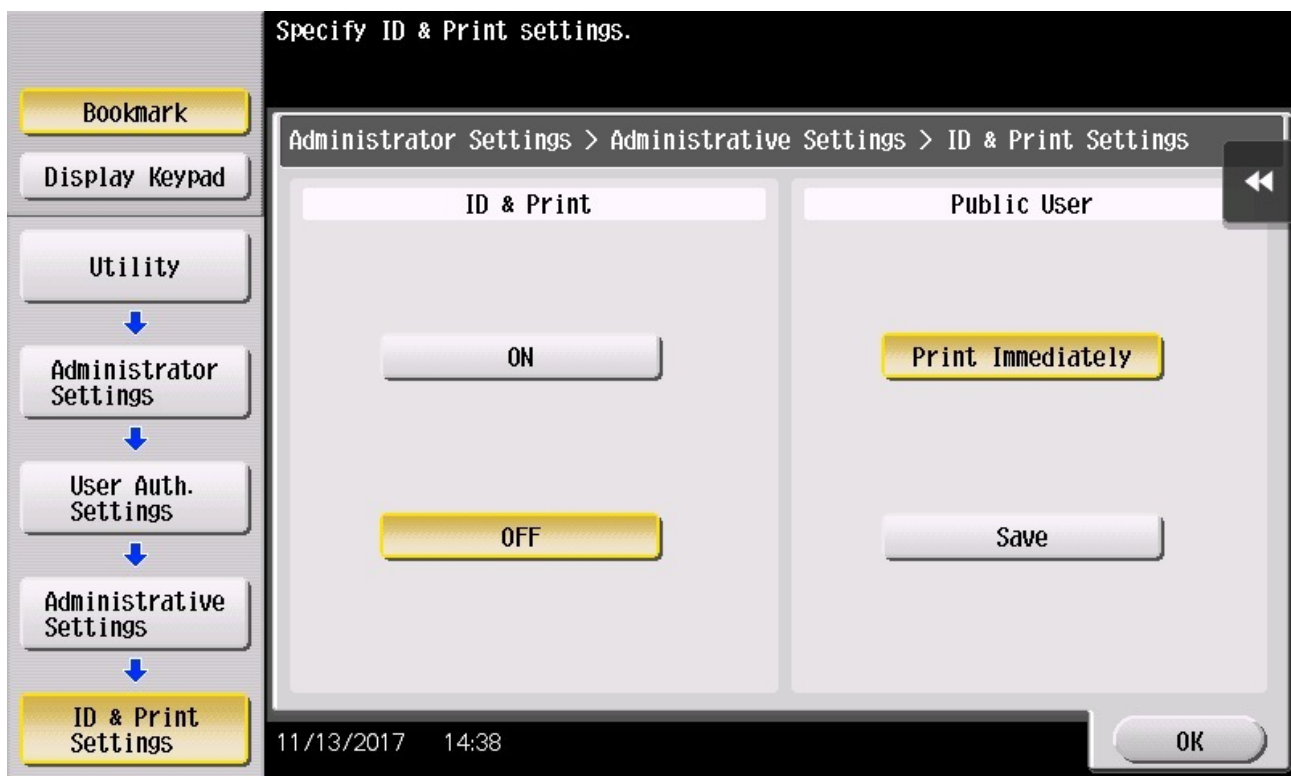


Konica Minolta Integrated users must log in twice to release jobs

This happens when ID & Print is switched on, either on the printer itself, or in the users' Printing Preferences.

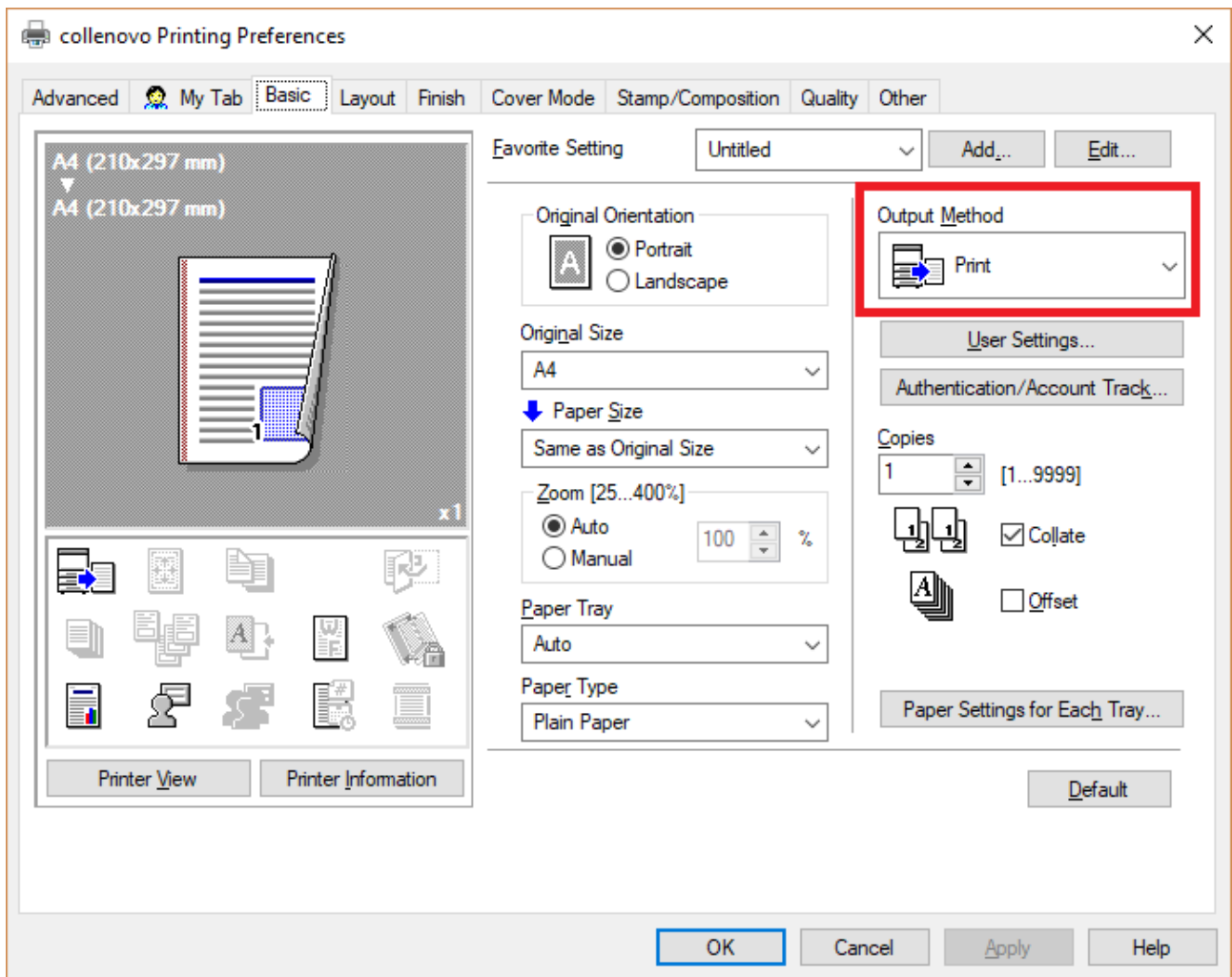
Ensure ID & Print is OFF on the printer.

- At the printer, press the Menu button.
- Touch the **Utility** button.
- Touch **Administrator Settings**.
- Enter the admin password and touch **OK**.
- Touch **User Authentication / Account Track**.
- Touch **User Authentication Settings**.
- Touch **Administrative Settings**.
- Touch **ID & Print Settings**.
- Touch **OFF** and then **OK**.



Ensure ID & Print is enabled in the users' Printing Preferences

- On the user's PC, open the **Printing Preferences**.
- Click the **Basic** tab.
- Ensure the **Output Method** is set to **Print**.



Document revision date: 2018/11/19
Software version: 2.2.50.1
© 2022 Blue Swift Software CC