

Print Director™

Installation Guide



© Blue Swift Software CC
Blue Swift Technologies is the
trading name of Blue Swift
Software CC
Reg No. CK2002/006045/23

Document revision date:
24/08/2023
colin@blueswift.co.za

Blue Swift
TECHNOLOGIES

Table of Contents

Installing Software	1
<i>Determine the site requirements</i>	<i>1</i>
Ensure compatible networking & operating system infrastructure exists.....	1
Check for an existing database server	1
Confirm device compatibility for embedded applications	1
Identify the tracking requirements	1
Identify machines requiring software installation	1
Determine the most efficient deployment strategy	2
Firewall issues.....	2
<i>Preparing the site for implementation</i>	<i>2</i>
Obtain access rights to relevant machines.....	2
Prepare any firewalls for required ports	3
<i>Installation procedure.....</i>	<i>3</i>
SQL Server Express Installation	4
Create the database	5
Configuring the database connection on other machines	8
<i>Remote deployment via Active Directory Group Policy</i>	<i>8</i>

Installing Software

Determine the site requirements

Ensure compatible networking & operating system infrastructure exists

Print Director tracks Windows print servers on a network. WAN networks are supported and the software can operate in Offline Mode (i.e. if the connection to the central database is lost, they will cache transactions locally).

Currently Unix, Linux and Macintosh print servers are not supported. However, printouts from client machines using these OS's to Windows print servers will be tracked. Note the minimum requirements in [Technical Requirements](#).

Check for an existing database server

The Print Director database is supported on Microsoft SQL Server 2008 – 2022 on both full and Express editions. Some sites may have an existing SQL Server that is used for other applications. It may be more beneficial to create the database on this server since it may be optimised for database services and have backup procedures already in place. Enquire with the system administrator whether the PD database may be installed on this server and ensure you will have sufficient access rights to create the database on this instance.

If there is no existing SQL Server, a machine must be allocated for an SQL Express installation. This could be the primary print server or any other machine.

Confirm device compatibility for embedded applications

Submit the device models to the reseller for confirmation of support by the embedded applications.

See [Konica Minolta supported devices list](#).

See [Lexmark supported devices list](#).

Identify the tracking requirements

Knowing exactly what the site needs to track is key to a successful implementation. Identify what types of print servers exist on site:

- Spooled print servers: A print server that has a number of shared printers set up. Clients then connect to these printer shares to print.
- Desktop print servers: Workstations that have a desktop inkjet or laser printer connected to the LPT or USB port.
- Direct-to-IP printing: Workstations that print directly to network connected printers.

Identify machines requiring software installation

PDServer:

Normally only one PDServer is required on a network. This is the module that communicates with the embedded software on the printers, and executes scheduled tasks (e.g. report emails and Active Directory or Azure AD synchronisation).

There are cases however, where more than one PDServer is required. An example would be a client that has multiple sites connecting to a central database over a WAN. It would be advisable to install a PDServer at each site. If the WAN were to go down, users would still be able to log in to the printers, as the local PDServer would continue operating in 'offline mode'.

PDAgent:

All print servers (spooled, desktop and direct IP workstations) will require the *PDAgent* software module. Client workstations that print to a print server will not need the *PDAgent* unless:

- They have any local direct-to-IP or USB print queues.
- They will perform popup account billing.
- They require popup user authentication.
- They require popup Rule violation notifications.

These machines must meet the minimum requirements (see [Technical Requirements](#)). A reboot is not required, and the installation can be pushed via Group Policy or a similar deployment system (e.g. Microsoft Intune).

Resource Manager:

Administrators that conduct tasks such as altering printout pricing and adding users and accounts will require the *Resource Manager* module. Ensure that their workstations meet the minimum requirements (see [Technical Requirements](#)). No reboot is required.

PDReports:

Administrators that generate ad-hoc reports require the *PDReports* module. Confirm that these machines adhere to the minimum requirements (see [Technical Requirements](#)). No reboot is required.

Determine the most efficient deployment strategy

If a site only requires a few software modules to be installed, it would most likely be more efficient to manually install at each machine. An example of such a site would be one with a few print servers and users that do not require the popup client.

Sites that require many software modules to be installed may need to make use of a *remote deployment* strategy. Remote deployment is possible in sites that require all machines and users to log on to an Active Directory or Azure AD domain. Group Policy objects can be configured in the Active Directory that governs the deployment of packages to specific machines. An example of such a site would be one with many workstations that all print directly to the IP of the printers. The *PDAgent* module can be remotely deployed to all these workstations. Another example is a site with all their users making use of popup account billing (to perform third-party account billing).

Firewall issues

The system administrator would need to be informed of the port requirements for Print Director. See [Technical Requirements](#) for details. Note that if Windows Firewall is used, the *PDAgent* modules automatically create an exception for themselves.

Preparing the site for implementation

Ensure that all of the following steps are performed in advance of the scheduled implementation (e.g. 1 week). This is especially relevant at sites that will use remote deployment (Group Policy / Intune).

Obtain access rights to relevant machines

- **Database machine:** If SQL Express is to be installed (i.e. the site does not already have an SQL Server), obtain an administrative username and password for the database machine.

- **Manual deployment on each machine:** Administrative access rights are required for the installation of all modules.
- **Remote deployment via Active Directory:** Sufficient access rights to edit Group Policy Objects will be required.

Prepare any firewalls for required ports

The PDAgent module will automatically add an exception for itself in Windows Firewall. When the client application for PDAgent starts up, Windows Firewall should display a window asking whether or not to unblock it.

If any third-party firewalls exist on site, they should be configured to open the required ports (see [Technical Requirements](#) for port numbers).

The installation of SQL Express should automatically add the required Windows Firewall exceptions if the Print Director installer is used. If SQL Express is installed using the Microsoft installer, a firewall exception must be added for the sqlsvr.exe and sqlbrowser.exe processes manually (as well as enabling TCP/IP in SQL Server Configuration Manager).

Installation procedure

Execute **PrintDirector.EXE** from the installation CD folder. The first form will be the end-user licence agreement. Please read the agreement carefully and if accepted, tick the **I accept the terms of the licence agreement** checkbox and click **Next**.

The next form will allow you to choose which modules to install.

The screenshot shows the 'Print Director Setup' window with the following components and options:

- Database server:**
 - ☒ Install SQL Server Express
 - ☐ Use an existing SQL instance
- Print Director applications:**
 - DBTools:**
 - Database creation and maintenance
 - ☒ Create database
 - PDServer:**
 - Device communication & scheduled tasks
 - PDAgent:**
 - Print queue control.
 - Popup client application.
 - PDReports:**
 - Reporting application for Print Director
 - ☒ Desktop shortcut
 - ☐ Launch after install
 - Resource Manager:**
 - Configuration application for Print Director
 - ☒ Desktop shortcut
 - ☒ Launch after install
- Prerequisites:**
 - .Net Framework: Installed 4.8
 - Crystal Reports: Install required ☒ Install CR


Buttons at the bottom: Back, Next >, Cancel.

Install only the packages required for the local machine. If all packages are required, leave all the checkboxes selected.

SQL Server Express Installation

If the **Install SQL Server Express** option is selected, the installation settings form will be displayed after clicking **Next**.

Installer path:

This will default to the SQL 2017 Express installer that is normally contained on the Print Director CD. However, if you would like to install a newer version SQL Express, you can change the path to the installer by clicking the  button.

Authentication:

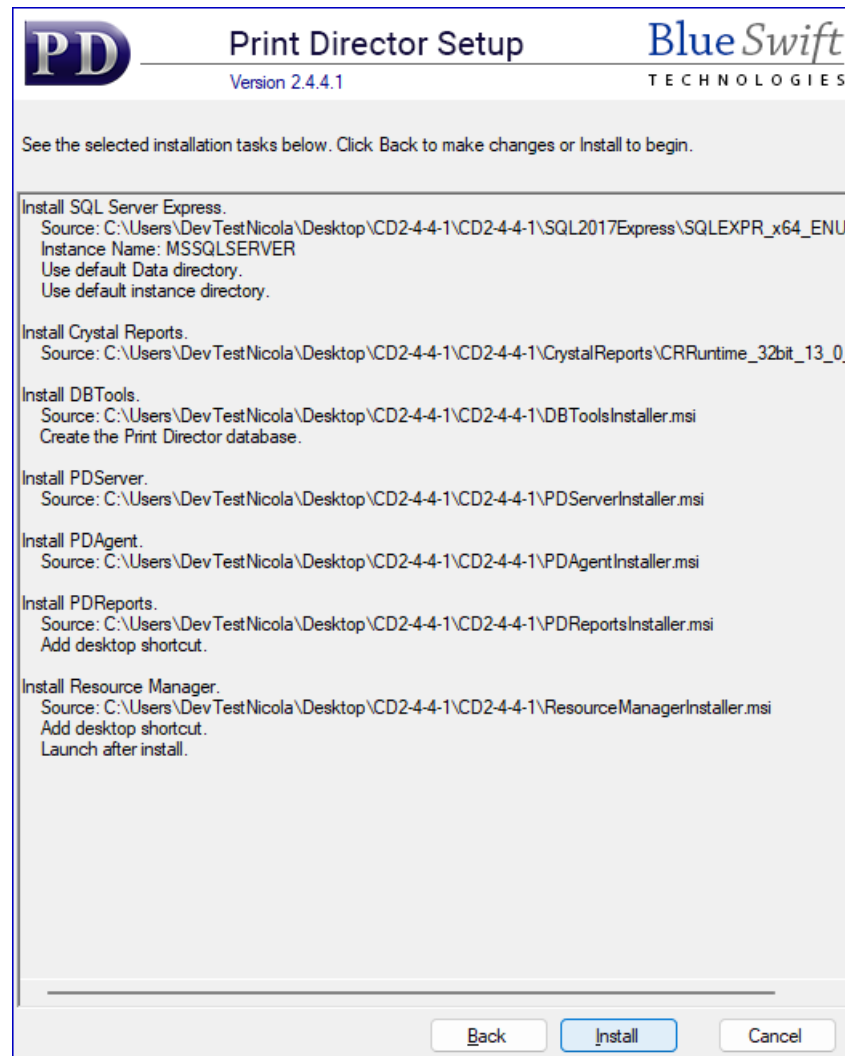
Use a strong password that meets the policy requirements for the domain. If the password doesn't meet the policy requirements, the installation will fail. Please keep a record of this password.

SQL Server Instance Name:

If there is no existing default instance of SQL Server (check services.msc for **SQL Server (MSSQLSERVER)**) change the option to **Default instance**. Using the default instance means that the SQL Browser service is not required, and you don't need to specify the instance name when entering database connection settings for other module installations.

Use the named instance '**PD**' only if there is an existing default instance of SQL Server that we can't use for the PD database.

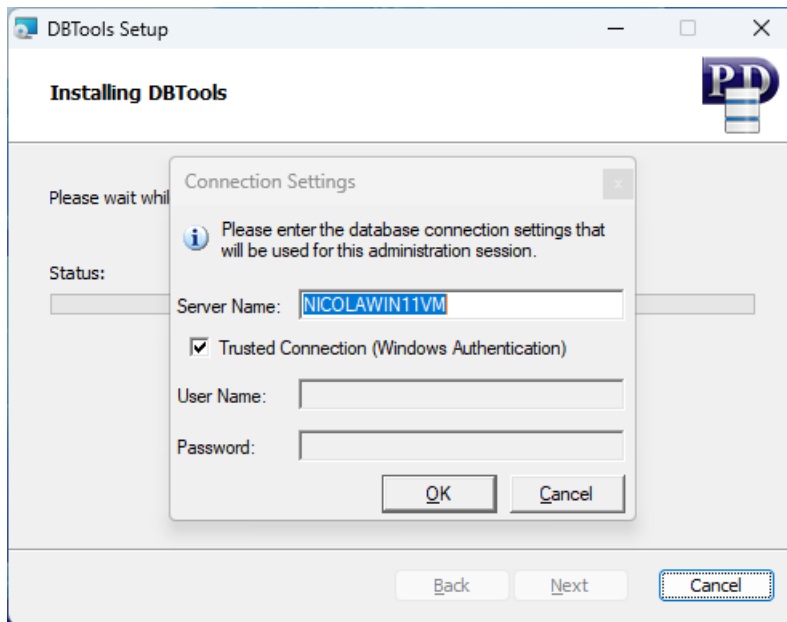
Accept the default data paths unless the system administrator requires them to be changed and click **Next**.



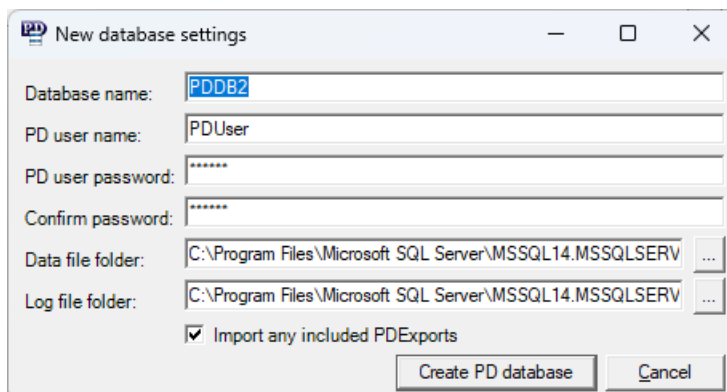
Check the summary of installation tasks. Click Back to make changes or **Install** to begin the installation.

Create the database

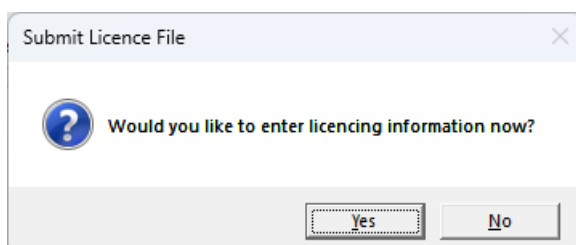
During the DBTools installation, the Print Director database can be created if the checkbox was selected on the initial screen.



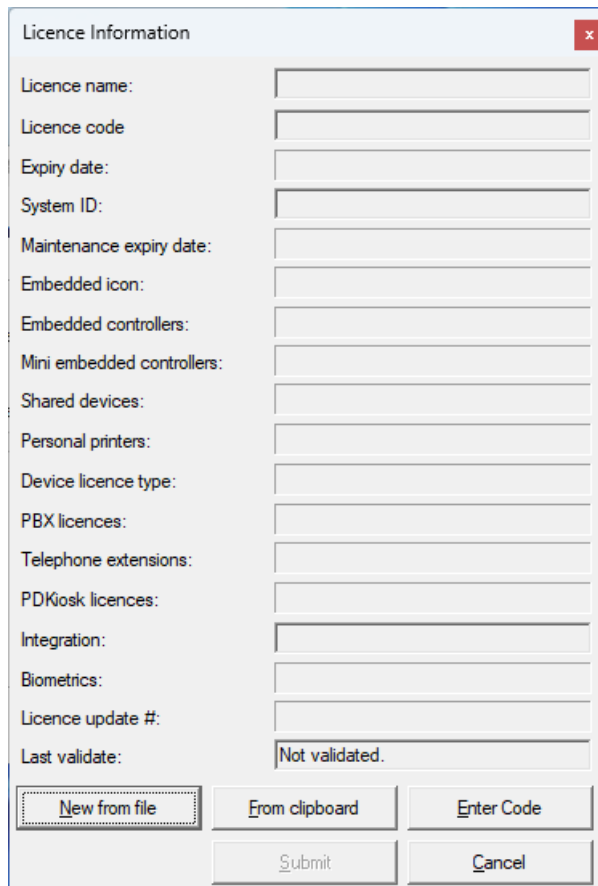
Enter the name of the SQL Server in the **Server Name** text box. If the server has a default instance of SQL Server then the server name is the same as the hostname of the database machine. If it has a named instance then the server name is **MachineName\InstanceName** (e.g. PDSERVER\PD). Leave the **Trusted Connection** check box ticked unless the server is on another machine on which the current logged-in user does not have sufficient access rights.



The **New database settings** window will be displayed. In this window, you can customise the name of the database and the credentials of the limited user that the PD modules will use to connect. This SQL user will be in the 'public' server role and it will have 'dbowner' membership in the PD database. Click the button **Create PD database**.



After the database has been created, a message will be displayed asking if a licence file should be submitted. Choose **Yes**.



The 'Licence Information' dialog box contains the following fields and buttons:

- Licence name:
- Licence code:
- Expiry date:
- System ID:
- Maintenance expiry date:
- Embedded icon:
- Embedded controllers:
- Mini embedded controllers:
- Shared devices:
- Personal printers:
- Device licence type:
- PBX licences:
- Telephone extensions:
- PDKiosk licences:
- Integration:
- Biometrics:
- Licence update #:
- Last validate:

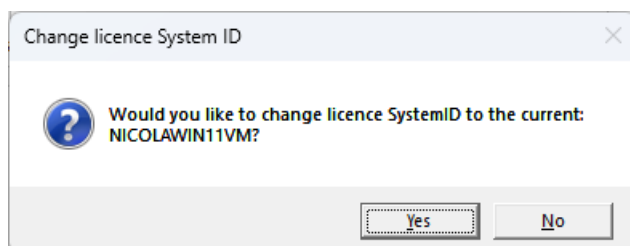
Buttons at the bottom:

- New from file
- From clipboard
- Enter Code
- Submit
- Cancel

The licence can be applied in one of three ways, the method chosen depends on what is most convenient at the time of install:

1. Using the licence file that has been saved to the server:
 - a. Click on **New from file** to browse where you saved the licence file (*.set) that you received.
2. Using the licence code. This is a 12-digit hexadecimal code, supplied by the reseller:
 - a. Click **Enter Code**.
 - b. Type in the 12-digit code and click **OK**.
3. Using the encrypted text. This is supplied in the body of the published licenced email:
 - a. Copy the encrypted text to the clipboard.
 - b. Click the **From clipboard** button.

New licences are normally issued with a System ID that will not match the hostname of the server. In order to submit a licence, the System ID and hostname must match. So, new licences will allow a single opportunity to automatically update the System ID to match. A window will be displayed asking you to confirm this before you can click **Submit** and the rest of the installation will continue.



The 'Change licence System ID' dialog box contains the following text and buttons:

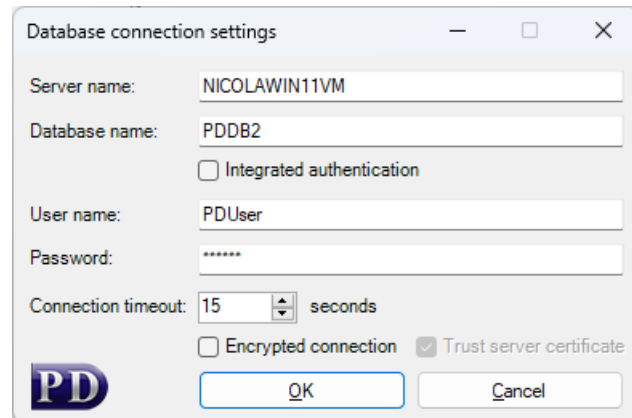
Would you like to change licence SystemID to the current:
NICOLAWIN11VM?

Buttons: Yes, No

The Resource Manager window will be displayed at the end of the installation if it was configured to do so on the initial form.

Configuring the database connection on other machines

If modules are installed on machines other than the machine on which the database was created, the database settings will need to be configured. The form below will be displayed on startup of Resource Manager or PD Reports. In the case of an installation of PDAgent, the form will be displayed after the install wizard completes.



The **server name** is the machine name on which the SQL Server is running. If it is a named instance it will be MachineName\InstanceName (e.g. **PDSEVER\PD**). The username **PDUser** (password is **PDUser**) is filled in by default. This user account is created with the Print Director database. Accept these defaults unless specifically instructed not to by the system administrator.

Remote deployment via Active Directory Group Policy

See document [Group Policy Deployment of PDAgent](#).